

Family Promise

of Gallatin Valley

IMPACT REPORT

2023-2024





Our transformative programs are designed to foster strength and resilience, create pathways for educational growth, and nurture a deep sense of community and belonging. We are committed to continuously developing, evaluating, and refining our initiatives, ensuring that every child and family we serve has the best opportunity for lasting sustainability and self-sufficiency.


**PREVENTION
& DIVERSION**

EMERGENCY SHELTER
6 units (8 more under construction)

HOUSING
23 units


STABILIZATION

COMMUNITY
*RISING STARS EARLY LEARNING CENTER
& FAMILY RESOURCE COORDINATION*



Babies and toddlers are among the Americans most at risk of eviction. They are facing an alarming reality that threatens their early development and well-being.

Young children are particularly vulnerable, as the instability of housing can severely impact their physical and emotional growth during crucial formative years. Without a stable environment, they may experience disruptions that affect their health, education, and overall future potential.



Addressing the needs of families with young children is essential to breaking the cycle of poverty and ensuring that children have the opportunity to thrive in a secure and nurturing setting.



TOTAL IMPACT

“The work ahead of us is urgent. We are seeing a rise in the number of families experiencing homelessness due to the increasingly costly housing market. I am confident that our innovative strategies in prevention, shelter, housing, and supportive services for children and their families will not only guide this critical effort nationwide but also ensure that every child has a place to call home.”

Anna Edwards, Family-School Services Coordinator, Bozeman School District 7, and FPGV Board President

391

Families served

645

Children served

19,015

Bed nights provided

1017%

Increase in families served since 2019



Emergency Shelter Outcomes

Average Days in Shelter: **110 days**

Of the families who successfully completed FPGV's shelter program **88% were still in housing 12 mo. later**

98% of families saved money
Average savings: **\$4,300**

54% of families received mental health services

85% of families were connected with health care services

78% of families had reliable transportation

10X

FAMILY PROMISE
OF GALLATIN
VALLEY PROVIDES
TEN TIMES THE
IMPACT FOR
EVERY DOLLAR
DONATED

PREVENTION & DIVERSION

Family Promise works with families to avoid the trauma of losing their housing, and we are there when a family's homelessness is imminent.

Through our Prevention and Diversion programs, we provide temporary assistance needed to prevent entering emergency shelter or maintain stable housing. Services include rental payment assistance, landlord mediation, and transportation and utility support.

Prevention & Diversion
Services helped:

72 Families

242 Individuals

135 Children



“ Family Promise helped me stay consistent with setting weekly goals. They also helped me to be accountable for following through with my goals.”



Family Promise's Shelter Programs provides temporary shelter and highly individualized, person-centered, trauma-informed case management to move families from homelessness to housing independence.

We serve pregnant individuals, families with children under 18, and diverse family compositions, offering immediate assistance to those at risk of exposure to the elements.

Emergency Shelter Services helped:

47 Families

173 Individuals

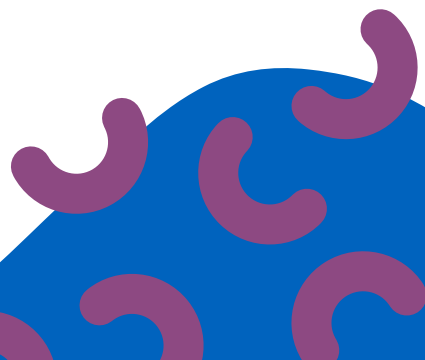
98 Children

87%

of families served exited into positive housing



EMERGENCY SHELTER



SUPPORTIVE HOUSING



Supportive housing plays a crucial role in supporting our local communities by providing affordable living options for families working in essential sectors. It helps stabilize the workforce, making it easier for employees to live near their jobs, reducing commute times, and enhancing overall quality of life.

Transitional Housing Services helped:

19 Families

76 Individuals

46 Children

Workforce Housing Services helped:

13 Families

50 Individuals

25 Children

Stabilization Programs provide continued support and reduce the risk of a family's re-entry into homelessness. We stay connected with families as they transition out of Prevention, Diversion, or Emergency Shelter. Housing Stabilization also helps families navigate secondary traumas such as: financial strains, employment barriers, unstable mental health, and previous debts.



88% were still in housing
12 months later

Graduated Support
Services helped:

30 Families

100 Individuals

53 Children

“It was very helpful to have the structure and support provided by Family Promise. It made us all more responsible.”

124 Children served
199 Scholarships Awarded
Totaling to **\$119,700**

Rising Stars Early Learning Center provides affordable, quality child care and early learning opportunities to children that improve developmental outcomes and allows families to enter the workforce, increasing their ability to provide for their family and participate in our local economy. Children will never be turned away for their family or guardian's inability to pay.

Family Resource Navigation served:

223 Families
882 Individuals
445 Children



Homelessness may be prevented by simply connecting families to other resources in our community, developing a new budget, or providing food, diapers, or gas cards. If a solution is not found during this process, they are referred to one of our many housing programs.

412 Volunteers

2,733 Hours

Volunteers are the backbone of all of our programs. For 19 years, volunteers have made meals, provided companionship, read stories, and offered compassion and support. Family Promise offers many exciting opportunities to use your skills for impact through volunteering.

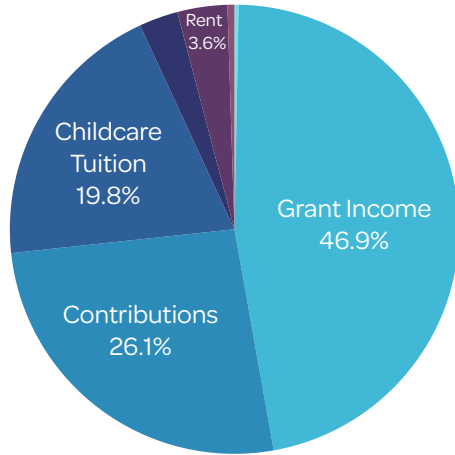
“I worked for 40 years and now that I have retired, I want to give back to Bozeman. I am learning new skills and using my existing skills to help create clean living environments. I have made new friends who have common interests, and this has been a great way for me to be involved in helping newcomers to Bozeman find clean and affordable housing.”

Tom Plumb, FP Volunteer who has donated over 100 hours in 2024



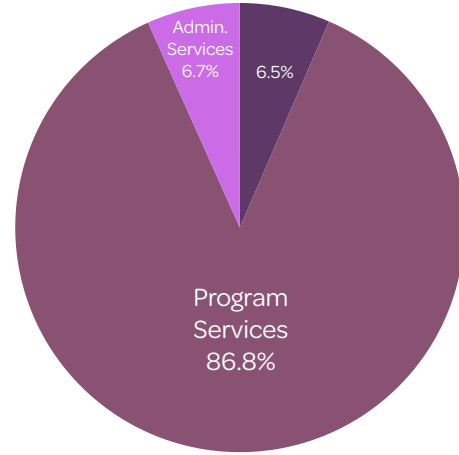
VOLUNTEERS

TOTAL INCOME \$4,894,929



- Grant Income \$2,294,848
- Contributions \$1,276,944
- Childcare Tuition \$970,695
- In-Kind Donations \$138,893
- Rental Income \$174,569
- Special Events/Fundraisers \$25,282
- Other \$13,698

TOTAL EXPENSES \$4,029,192



- Program Services \$3,496,931
- Administrative Services \$268,739
- Fundraising \$263,522



Family Promise of Gallatin Valley's mission is to empower families experiencing housing insecurities to secure a safe, affordable home, a livelihood, and the chance to build a better future for their children.

Family Promise



of Gallatin Valley



Your gift provides a home for children and families in crisis and hope for the future.

BOARD OF DIRECTORS

Kelley Dowdell, Past Chair

Anna Edwards, Chair

Chris McCloud, Vice Chair

Tori Sproles, Secretary

Gregory Morse, Treasurer


Kathy Stark

Ebeth Anthony

Christina Julian

Charlotte Durham

Darrell Hirsch



“ I feel so great about raising money for Family Promise because every dollar goes towards helping families help themselves through proven programs and with the support of our fabulous staff. Also, I know that every dollar supports children because that’s who we serve – families with children.”

EBeth Anthony, Board Member